

Background

Frailty: An increased vulnerability to stressors

Lower Annual income is associated with increased frailty

We aim to characterize the relationship between frailty and annual income

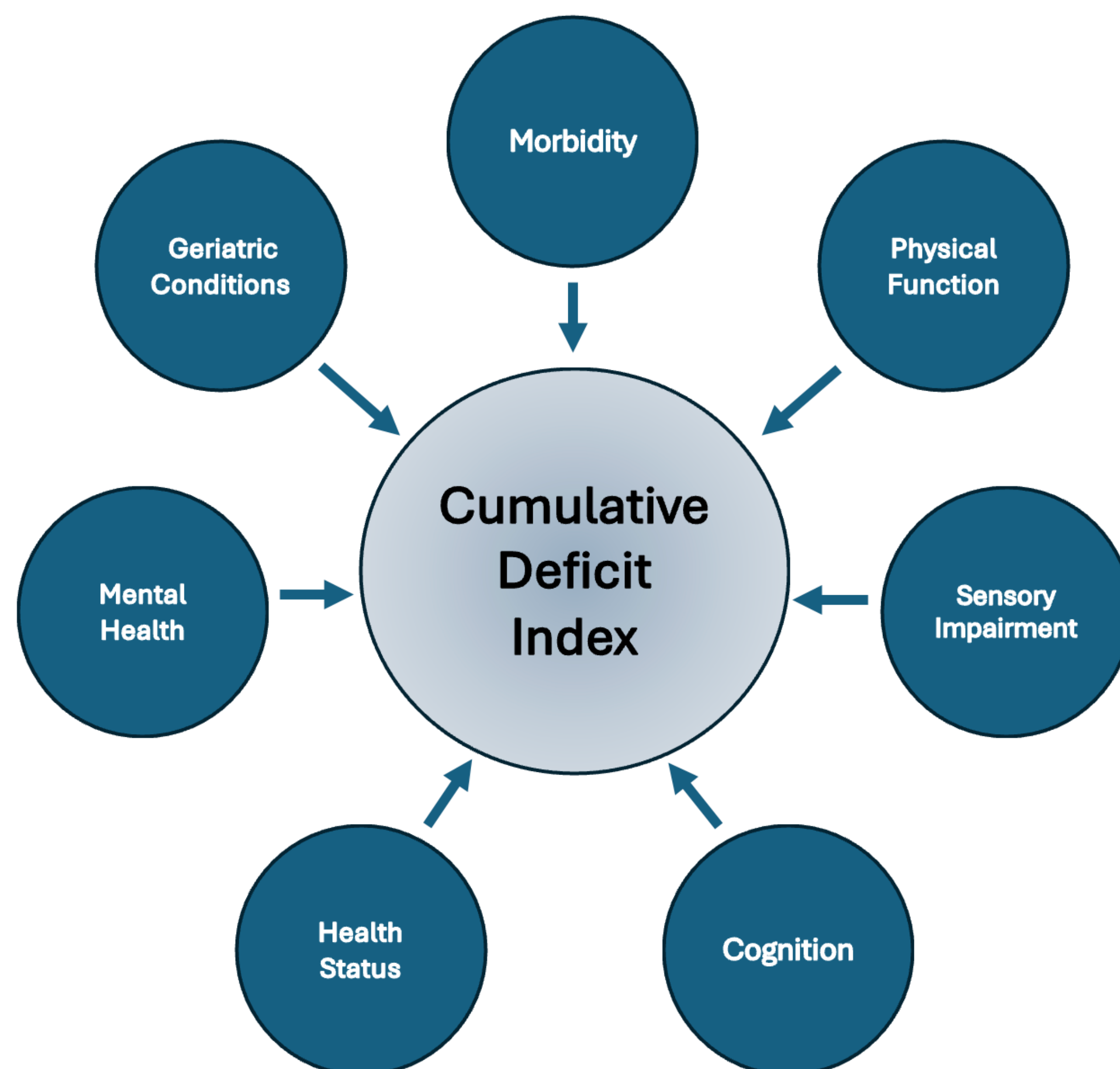
We hypothesize that frailty will scale incrementally with income

Methods

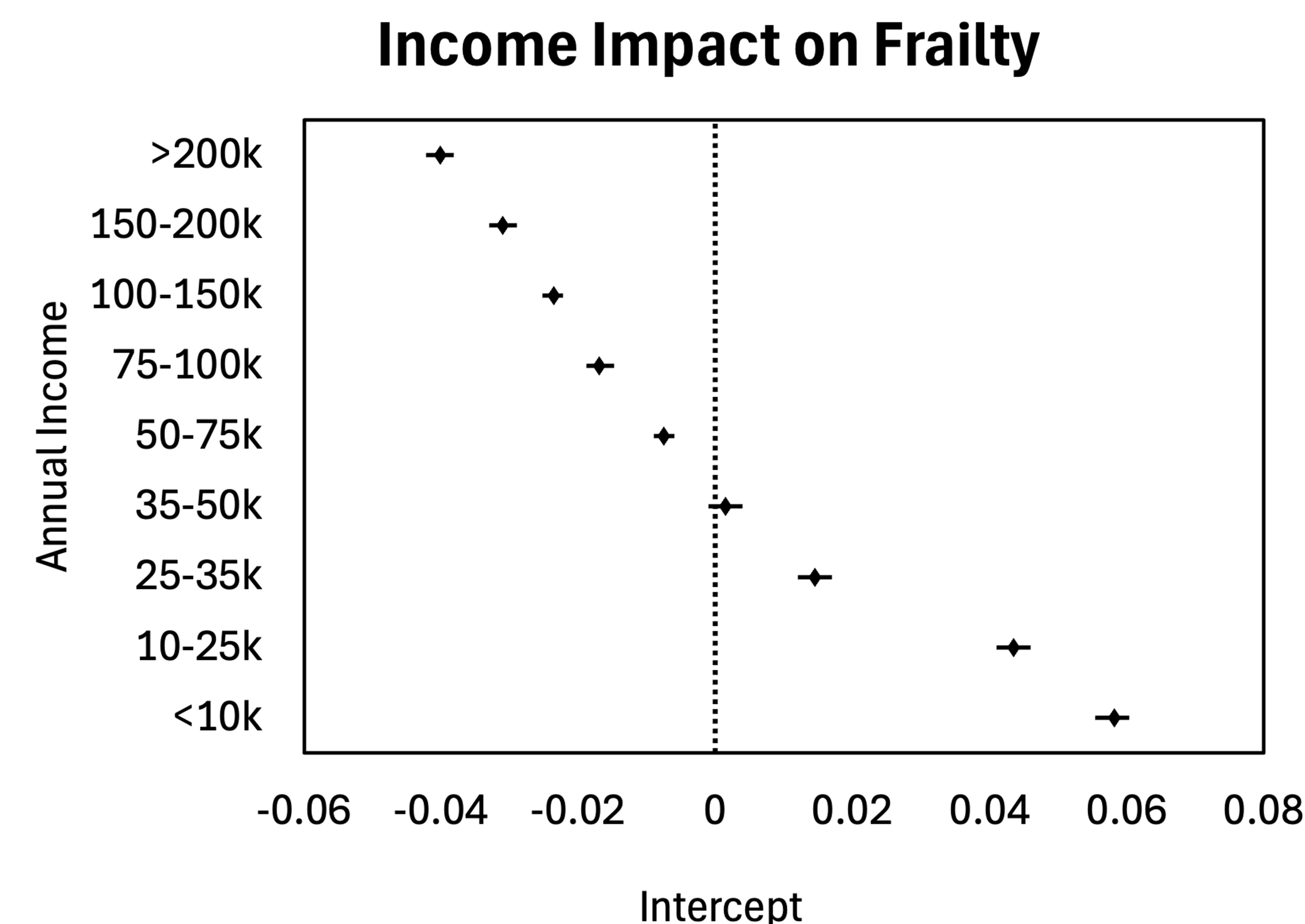
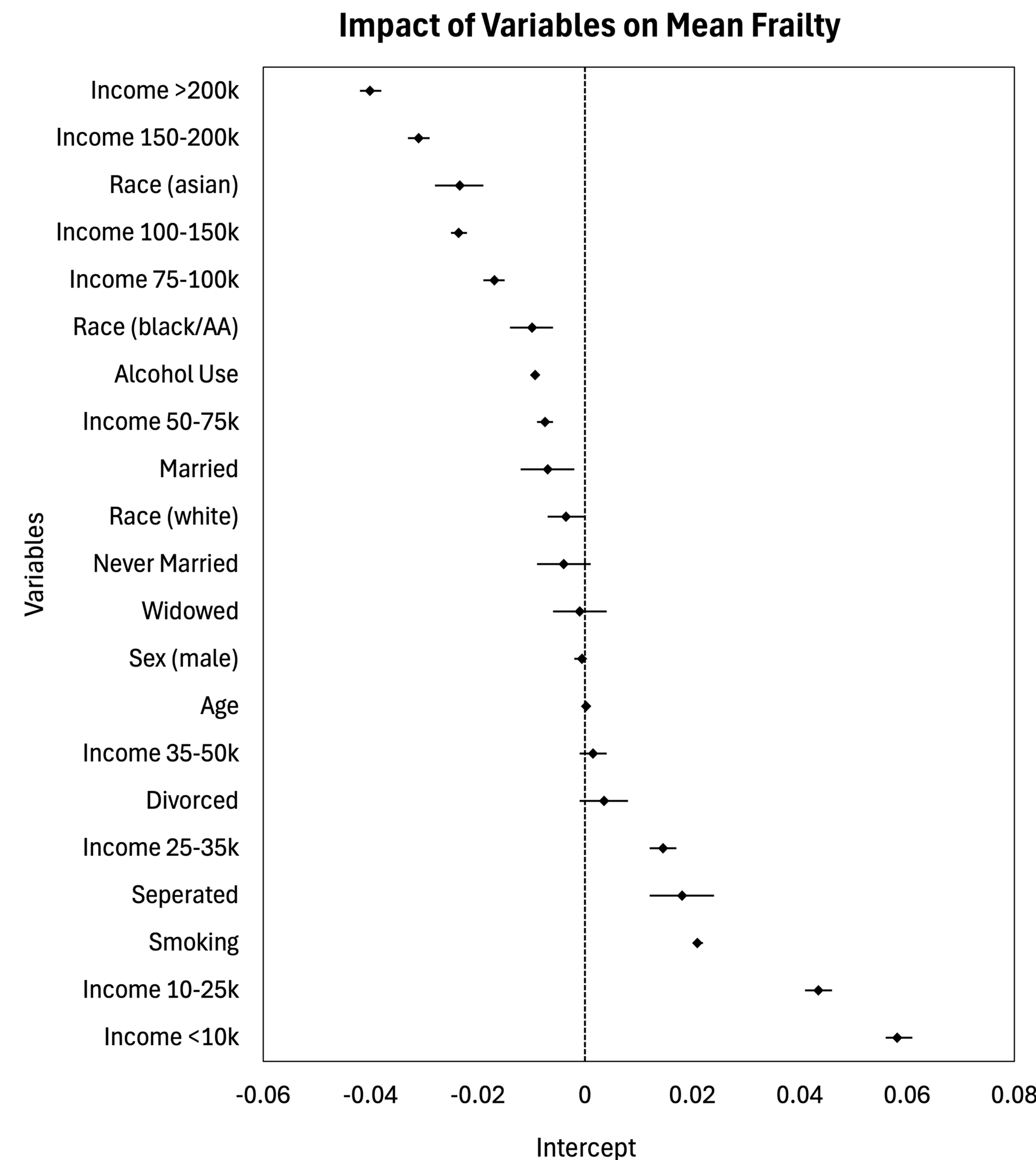
Frailty Measure: Deficit-Accumulation Model

Compared six frailty predictors

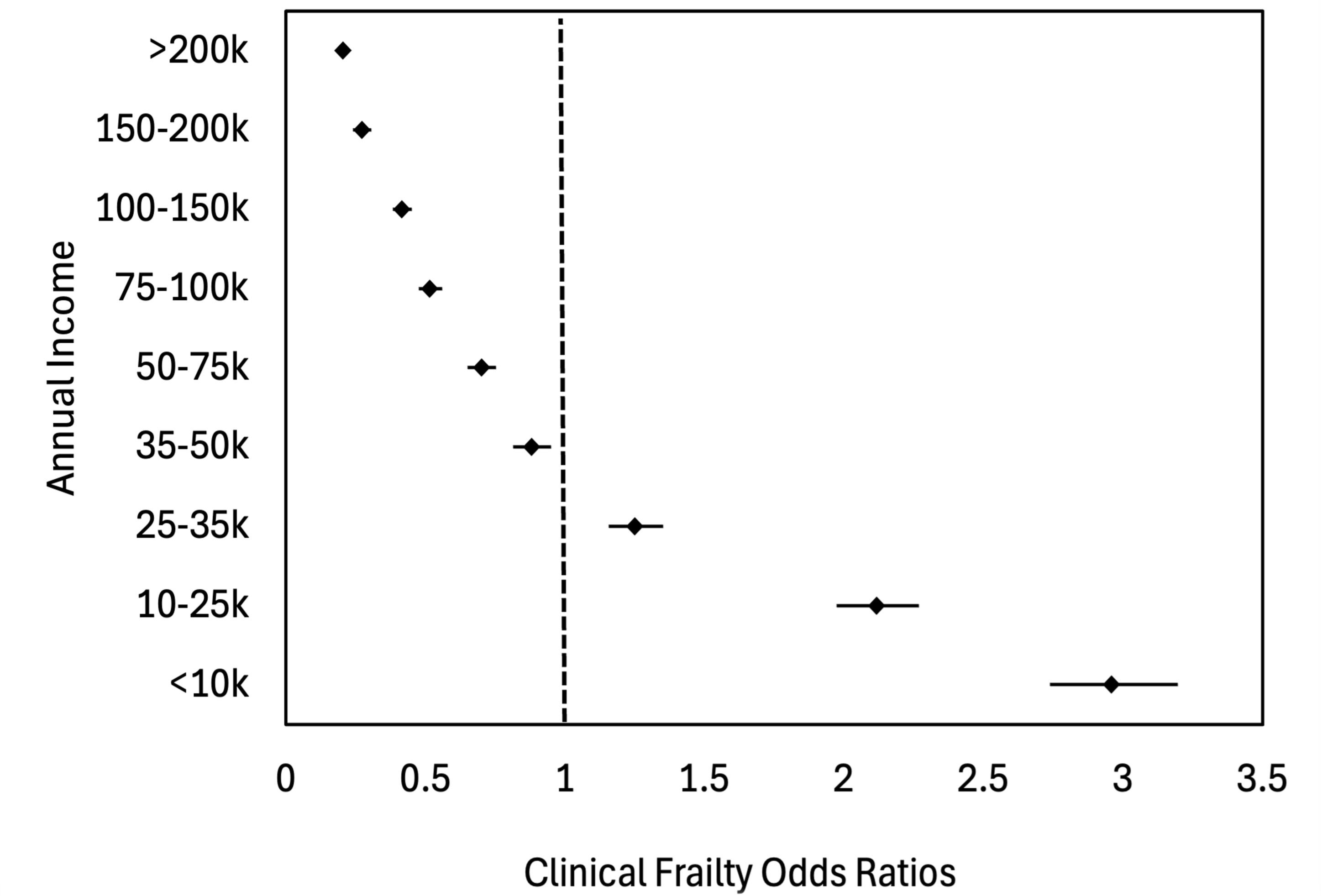
Calculated Odds Ratios for each predictor



Results



Clinical Frailty Odds Ratios by Income



Discussion

Higher annual income was associated with lower mean frailty and less risk of frailty development

Lower annual income demonstrated the opposite effect

Future Steps

Investigate the role of economic support as a frailty prevention tool.

Support initiatives which address income inequality more broadly rather than poverty

