

Cervical Cancer in Louisiana

2017- 2021
STATS AND
FACTS

221

NEW CASES FOUND IN
WOMEN EACH YEAR

2,444

CERVICAL CANCER
SURVIVORS SINCE 2000[#]



The 5-year relative
survival for Louisiana
women of all races⁺

64%

79

cancer deaths among
women in Louisiana each
year on average

Louisiana's rank in the
U.S. for death rate
of cervical cancer²

7th

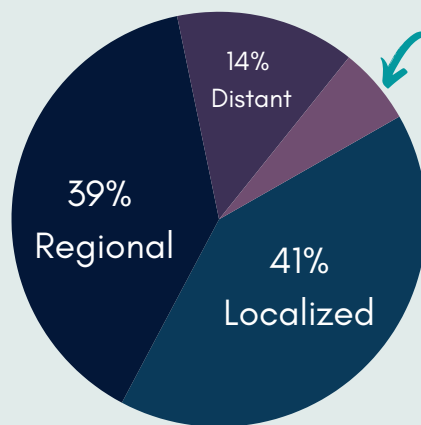
In 2020,
8 out of 10
women aged 21-
65 years were
up to date with
their Pap smear
test for early
detection in
Louisiana.³



STAGE AT DIAGNOSIS DISTRIBUTION

41%

of new cases were
found at early stages
(localized)



1 National Cancer Institute. Cervical Cancer Prevention PDQ, 2024
2 State Cancer Profiles, National Cancer Institute and Centers for Disease Control and Prevention, 2024
3 Centers for Disease Control and Prevention, BRFSS Prevalence and Trends Data 2020
+ Survival estimates are based on cases diagnosed 2010-2020 and followed through 2021
Prevalence counts are an estimate of the number of survivors on 1/1/2021 who were diagnosed between 2000-2020.

RATE OF NEW CANCER CASES PER 100,000 LOUISIANANS

Black 10.9

White 8.2

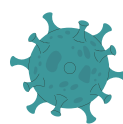
RATE OF CANCER DEATHS PER 100,000 LOUISIANANS

Black 4.6

White 2.5

Average annual rate per 100,000 age adjusted to the 2000 US standard population

Risk Factors¹



HPV Infection



Having Many
Children



Longterm Use of
Oral Contraceptives

If infected with HPV, these are
additional risk factors:



Exposure to DES
in the Womb



Tobacco
Smoking

Visit the Louisiana
Cancer Prevention
and Control Program's
Cervical Cancer Page
for Screening and Risk
Factor Information



Getting vaccinated for HPV
can help prevent Cervical
Cancer¹

LSU Health
NEW ORLEANS
Louisiana Tumor Registry

LOUISIANA TUMOR REGISTRY



One of 22 NCI-designated SEER cancer registries that gather information about cancer cases to help guide policies for cancer prevention, early detection, diagnosis, treatment, prognosis and survivorship.

OUR MISSION



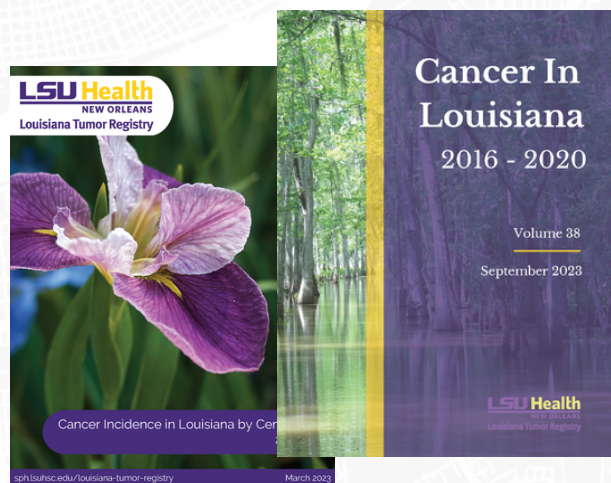
To collect and report complete, high-quality, and timely population-based cancer data in Louisiana to support cancer research, control, and prevention.

OUR VISION



To reduce suffering and death from cancer using information collected by the Louisiana Tumor Registry.

ANNUAL REPORTS



For more information, please visit:

<https://sph.lsuhsoc.edu/louisiana-tumor-registry>

LTR-info@lsuhsc.edu | (504) 568 - 5757

LSU Health
NEW ORLEANS
Louisiana Tumor Registry

LTR is funded by the SEER Program (NCI), the National Program of Cancer Registries (CDC), and the State of Louisiana.