

# LSU Health

NEW ORLEANS

## School of Public Health

September 2019

# That's a WRAP

Words from the offices of *Research, Academics & Practice*

## TABLE OF CONTENTS

ACADEMIC AFFAIRS	1
DIVERSITY & INCLUSION	2
PROFESSIONAL DEVELOPMENT	3
RESEARCH	5
STUDENTS	7
COMMITTEE UPDATES & ALUMNI SPOTLIGHT	9



SGA's Back to School Party in the LSUHSC Garden

## IMPORTANT DATES

### September

September 27—SPH Career Fair, 9 am—1 pm, HDC

### October

October 15—Priority deadline for financial aid for spring

October 16-17—John A. Rock, MD Visiting Scholar

October 17—Abstract deadline for Graduate Research Day

### November

November 8—Last day to defend theses and dissertations

November 8—Graduate Research Day

November 13—Spring 2020 Practice Experience Proposal Due

November 27—Spring 2020 Independent Studies, All Completed Paperwork Due

**Feeling overwhelmed?**

**Campus Assistance Program**

LOCATION: Human Development Center  
411 S. Prieur St., Suite 233

504-568-8888  
cap@lsuhsc.edu

Free, confidential services to all students, faculty, residents, & staff

## ACADEMIC AFFAIRS

### 2019 SPH Career Fair

One-On-One:  
Resume Review  
Cover Letter Review

Presentations On:  
Salary Negotiation  
Other Job Search Tips



Friday, September 27, 2019  
9:00 AM—1:00 PM  
Human Development Center

### Includes:

- \* Alumni Panel Discussion
- \* Employers and Practice Sites
- \* LUNCH!!

## DIVERSITY AND INCLUSION

*Just as a reminder:* The **SPH Diversity Committee** is an open committee. There are no assigned program representatives.

### ANYONE CAN JOIN!

Contact Dr. Randi Kaufman [rkauf1@lsuhsc.edu](mailto:rkauf1@lsuhsc.edu) for more information including meeting schedule.



**LSU Health**  
NEW ORLEANS

Farewell, Lofty Leadership...  
Welcome, Engaging Management

**HENRY MINTZBERG**  
**BEDTIME STORIES FOR MANAGERS**

Read about managing with soul, organizing like a cow, growing strategies like weeds, being a keynote listener...and more

Book Club  
Wednesday, October 2  
Noon  
MEB Atrium  
**Come Join Us!**

*For more information [rkauf1@lsuhsc.edu](mailto:rkauf1@lsuhsc.edu)*

*“Read about managing with soul, organizing like a cow, growing strategies like weeds, being a keynote listener...and more.”*

### UPCOMING READS.....

Title	Author	Month	Category
Invisible Women: Data Bias in A World Designed for Men	Caroline Cordera Perez	November	Gender Inequality
How to Kill A City: Gentrification, Inequality, and the Fight for Neighborhood	Peter Moskowitz	December	Housing

## Race Around the Table

**September 26th, 2019, 4-6pm, Lion’s Building, Room 602**

Leaders and influencers will come together on one night to host the largest simultaneous conversation about race in New Orleans's history. Campaign for Equity New Orleans (CENO) alumni will host events to discuss race, inequities, and how racial disparities are holding New Orleans back from realizing its true potential.

### What Is **Race Around the Table**?

On September 26<sup>th</sup>, 2019, New Orleans leaders and influencers will come together to host the largest simultaneous conversation about race in our city's history! All across the city, all in one night, CENO alumni will host events with their friends, neighbors, and family to discuss race, inequities, and how racial disparities are holding New Orleans back from realizing its true potential. Our event will bring the LSU NO HSC community together for facilitated small group conversations. Light refreshments will be served.

**We hope to see you there to keep the momentum going.**

**Registration is required.**



## PROFESSIONAL DEVELOPMENT

*School of Medicine  
Dean's Research Seminar Series*

**"The Scientists for Translational Research in Youth (STORY) Research Collaborative, LSUHSC School of Public Health"**

**Henry J. Nuss, Ph.D.**

Associate Professor  
Behavioral and Community Health Sciences  
LSUHSC School of Public Health

**September 18, 2019; 11am-noon**  
**Lion's 6<sup>th</sup> floor Large Conference Room**

*Lunch will be provided*



**Please email  
[Martha Cuccia](mailto:Martha.Cuccia@lsuhsc.edu)  
if you plan to  
attend APHA**



## Information Technology Office Hours

Faculty, staff, and students are invited to learn, ask questions, and share their ideas with LSU Health New Orleans IT staff

**Learn About  
New Services**

**Thursday,  
September 19**

Downtown Campus  
1:00 - 2:00 PM  
MEB Seminar Room 3  
and **zoom**

Dental Campus  
3:00 - 4:00 PM  
Auditorium A

**LSU Health**  
NEW ORLEANS

**Quickly Create a  
Survey, Quiz or Poll**

**This month's featured topic:**



**Get to Know  
Microsoft Forms**

**Presented by Todd LaGrange**

Learn More, Sign Up for Updates, **zoom**:  
<https://lsuh.sc/ITOfficeHours>

## APHA 2019

**ANNUAL MEETING & EXPO**  
**PHILADELPHIA | NOV. 2 – 6**

CREATING THE HEALTHIEST NATION:  
**FOR SCIENCE. FOR ACTION. FOR HEALTH.**

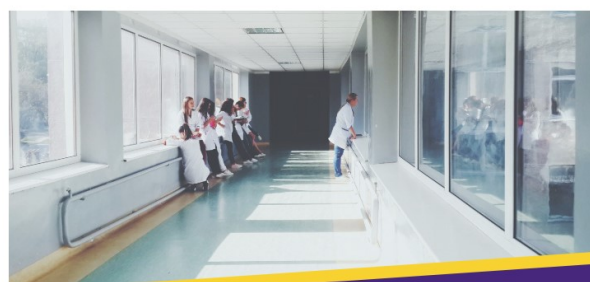
GLOBAL HEALTH INTEREST  
GROUP PRESENTS

## INTERNATIONAL DEVELOPMENT ACHIEVING REGIONAL OBJECTIVES

Speaker:  
Elena McEwan, MD  
STA Maternal and Child Health|  
Catholic Relief Services

**OCTOBER 16, 2019**  
**3:30 PM TO 4:30 PM**  
**MEB SEMINAR 4**

#HcSimWeek19



**Window Shopping: Check-in on our  
patient through the hospital glass!**



In celebration of  
Healthcare Simulation Week,

**September 16<sup>th</sup> - 19<sup>th</sup>**

**MEB 3110** (across from the cafeteria)

Check out simulated patient room to identify patient safety risks  
and enter for a chance to win prizes.

Brought to you by the School of Medicine Learning Center, the School of Nursing Simulation Center,  
and the Center for Interprofessional Education and Collaborative Practice

## PROFESSIONAL DEVELOPMENT

# Join Girl Scouts on Saturday, September 28

9:30 a.m. – 2 p.m.

Louisiana State University campus

**Believe in G.I.R.L.**  
(B.I.G.) event!



### Target Audience:

Nearly 2,000 **G.I.R.L.s** (**G**o-getters, **I**nnovators, **R**isk-takers, **L**eaders) from across southeast Louisiana! With a come and go, expo atmosphere, **Girl Scout troops** will explore the various exhibits and presentations throughout the day. Be sure to bring information to give out about your organization and any opportunities you have for Girl Scouts throughout the year.

Presenters will provide a hands-on, informative display or activity with educational aspects relating to Girl Scouting's focus areas such as **STEM** (Science, Technology, Engineering & Math), **Life Skills**, the **Outdoors**, the **Arts**, and **Entrepreneurship**. This is the perfect opportunity to showcase these areas and your organization, role models and career opportunities that exist, as well as how girls can get involved. Lunch will be provided to presenters.

## Association of Women in Science

E-mail [Crescent Combe](mailto:CrescentCombe) if you are interested in volunteering.

**Help needed for 12:00 to 2:30 pm shift**

Carpooling is an option!

Sign up @ <https://doodle.com/poll/9yubu4dfzqc3y6t6>

Event hosts 200 or so organizations with interactive displays focused on STEM, Arts, Outdoors, and Entrepreneurship. At our AWIS table, we typically see a lot of girls between 8 and 10 years old. Girl Scouts can don PPE and practice pipetting and measuring liquid, and/or construct simple circuits to light up LEDs, using electricity-conductive dough.

## Volunteers Needed

Airport public safety exercise  
Wednesday, Sep. 25



The Louis Armstrong New Orleans International Airport (MSY) is seeking 100 volunteers to participate in a full-scale airport public safety exercise. This important drill will help MSY and their public safety partners test emergency response plans in the event of an incident.

Volunteers will be assigned various roles to play in the exercise, including roles with varying degrees of injury. Role-playing with real people allows emergency personnel to fully test plans, policies, and response.

**Date & Time:** September 25, 2019, 7am-1pm

**Location:** Louis Armstrong New Orleans International Airport (MSY West Ramp - Red Roof Building - 4 W Access Rd, Kenner)

**Water, lunch and free parking are included.**

**Registration:** [Click here to register to volunteer.](#)



**RESEARCH**

**Graduate Research Day**  
**Friday, November 8, 2019**  
**ABSTRACTS DUE OCTOBER 17**  
**Human Development Center Building**



Graduate Research Day is a great opportunity to showcase the research that is being generated. The [Graduate Research Manual](#) highlights the objectives, format guidelines, rules, and judging criteria. Abstracts are due in on Thursday October 17. Attached are Abstract Instructions and the Abstract Submission form. You can consult the manual for additional information on how your poster will be judged.

Please contact the our SPH representative for more info [Ed Trapido, ScD](#)

**In– School Poster Printing Has Returned!!**

Need a poster printed? The typical scientific poster costs \$45 and will need to be charged to an internal program or project account through the LSUHSC accounting system (no cash or checks). Posters should be ordered 1 week prior to the date needed for pick-up. Contact [Whitney](#) for details.

**2019 National Hispanic Science  
Network  
International Conference  
October 9-11, 2019**

LSU Health Sciences Center New Orleans  
411 South Prieur Street, New Orleans, LA 70112



**Hortensia de Los Angeles Amaro, PhD**

Distinguished University Professor and Senior Scholar on Community Health  
Robert Wertheim College of Medicine and  
Robert Stempel College of Public Health and Social Work

*Life Adversities and Risk for Chronic Disease*

[Registration](#) is now open!

## RESEARCH

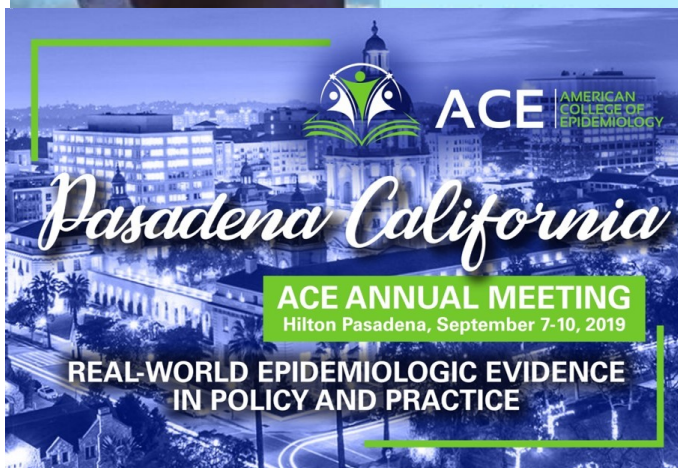
## Save the Date

October 16-17, 2019



John A. Rock, MD Visiting Scholar  
Francine Laden, ScD

Professor of Environmental Epidemiology  
Department of Environmental Health  
Department of Epidemiology  
Harvard T.H. Chan School of Public Health



Edward Peters, DMD, ScD; Tekeda Ferguson, PhD; Susanne Straif-Bourgeois, PhD; and Edward Trapido, ScD recently attended the American College of Epidemiology (ACE) Annual Meeting.

**Congratulations to Dr. Edward Peters on his induction as a Fellow into the American College of Epidemiology**

Also, presented: *The effect of neighborhood concentrated disadvantage on the association between hospital-associated infections and survival in people living with HIV* (poster); Susanne Straif-Bourgeois, PhD; Dayana Rojas, PhD (Class of 2019)

**LSU Health**  
NEW ORLEANS

School of Medicine  
Alcohol and Drug Abuse Center of Excellence

# A CITY IN CRISIS: THE OPIOID EPIDEMIC IN NEW ORLEANS

The Alcohol and Drug Abuse Center of Excellence (ADACE), an interdisciplinary research center of LSU Health, and the Schools of Medicine and Public Health invite you to participate in a one-day public forum on the crisis and strategies for reducing urban opioid overdoses and deaths. Regional urban leaders in city government, law enforcement, business, healthcare, mental health, and emergency medical services and other interested parties are encouraged to attend.

**THURSDAY  
10/31/2019**

8:00 am - 4:00 pm  
LSU Health Sciences Center  
Human Development Center  
411 S. Prieur Street  
New Orleans, LA 70112



Free registration is required. Please visit:  
<https://adace-opioid-forum.eventbrite.com>.

Contact: Rebecca Gonzales  
[rgonz4@lsuhsc.edu](mailto:rgonz4@lsuhsc.edu) | 504-568-6173

## STUDENTS

### LSUHSC IPSA Projects

#### New Orleans Women and Children's Shelter Outreach (NOWCS)

Established in 2015, there are currently two shelter locations, Liberty Street and Chateau d'Orleans. Students provide health education to the women living in the shelter and engage the children in various activities. NOWCS Outreach program, visit our [website](#) and [Facebook](#) page.

**Student Leader:** [Bailey Gentile](#)

**Faculty Advisor:** [Dr. Donna Williams](#)



#### Education Outreach at the Shelter 2020 S. Liberty St.

- \* Sept. 18 from 6-7pm ("Diabeats" Hip Hop Dance Class)
- \* Oct. 2 from 6-7pm (Mental Health Awareness Screening/Education)
- \* Oct. 9 from 6-7pm (Breast and Cervical Cancer Education)
- \* Oct. 16 from 6-7pm (Dance/Exercise Class)

#### Sensory Friendly Sundays

##### Sunday, October 20, 2019 at the [Audubon Zoo](#) for "Halloween"

A partnership with the Louisiana Children's Museum and the Audubon Nature Institute to host Sensory Friendly Sundays for children with disabilities and their families before the normal hours.

Student volunteers develop a unique theme and create a variety of activities to facilitate different motor, sensory and cognitive skills.

##### **Student Leaders:**

Louisiana Children's Museum [Katelyn Brady](#) or [Julie Heigle](#)

Audubon Nature Institute - [Elise Loisel](#) or [Ashley Whitlow](#)

#### Students for Sustainability

##### Wednesday, September 18, 12-1pm, MEB, Sem 7

Jane Patton from The Center for International Environmental Law (CIEL) will discuss the life cycle of plastics, tips about waste reduction and the facts & myths behind recycling in New Orleans.

Light lunch will be provided.

#### New Orleans Climate Strike

Join the rest of the world for the Global Climate Strike in New Orleans on **Friday, September 20th**. There are 3 locations hosting strikes throughout the city. Go to this link to find out more info: <https://actionnetwork.org/event/campaigns/us-climate-strikes>

#### Recycling Committee Meeting

##### Monday, September 23rd from 12-1pm in MEB Room 7.

Brainstorm campus sustainability projects





## STUDENTS

# STUDENT VOLUNTEERS NEEDED!

## ORAL HEALTH SUMMIT

DATE: OCTOBER 18, 2019

LOCATION: OUR LADY OF THE LAKE  
REGIONAL MEDICAL CENTER

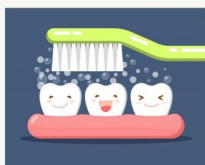


The Louisiana Oral Health Coalition is hosting the inaugural Louisiana Oral Health Summit!

This summit will bring together stakeholders including public health providers, academia, community organizations, associations, students, health systems, public health program staff, and policy-makers in oral health from across the state.

If you'd like to volunteer, email:

Lisa Staples at [lisa@eatmovegrow.us](mailto:lisa@eatmovegrow.us)  
or Hasheemah Afaneh at [hafane@lsuhsc.edu](mailto:hafane@lsuhsc.edu)



# THIS IS PUBLIC HEALTH.

[thisispublichealth.org](http://thisispublichealth.org) | [#thisispublichealth](https://twitter.com/thisispublichealth) | [#TIPH](https://www.facebook.com/thisispublichealth)

## Student Leadership Institute

[Registration Now Open!!!](#)

**Saturday, November 2 – Sunday, November 3**

**Location:** Philadelphia Convention Center

**Registration Deadline:** Registration will be open until October 18, or until the event sells out, whichever comes first.

**Attendees will learn:** (1) Three design thinking tools and methodologies (Affinity Mapping, Customer Journey Mapping, and Problem Scoping) and (2) How to use Execution Intelligence around ideas: Ideation Skills, Product Cycles, Resource Mapping

Through the Student Leadership Institute, you'll not only learn these skills, but be able to bring your project to a Guinness World Record event next year! Through our partnership with Experimental Civics, attendees who wish to do so will get to participate in Capsule, the largest civic hackathon in the world focused on addressing the climate crisis.



**LSU Health**  
NEW ORLEANS

## SGA's ReBuild Center Foot Health Drive

Ends Thursday,  
September 19

Collection boxes can  
be found @ 2nd and  
3rd floor elevators



## EVALUATION COMMITTEE

*The Evaluation Committee & Diversity and Inclusion Committee are working together to administer a CLIMATE SURVEY this November for faculty, students and staff.*

*Please participate when this opportunity is announced!!!*

Feedback Link still available:

<https://sph.lsuhsu.edu/resources/evaluation-committee/>

## CURRICULUM COMMITTEE

### New Chair:

Tung Sung Tseng, BCHS

### New Program Reps:

Ariane Rung, EPID

Dan Harrington, ENHS

Angela Chiu, HPSM

Meetings: Third Friday of each month

## ALUMNI SPOTLIGHT



**Rachel Mayer, MPH (BCHS—Class of 2017)** is a Senior Health Systems Analyst at The MITRE Corporation, where she serves as Principal Investigator on the MITRE Maternal Mortality Interactive Dashboard (3MID) Project. 3MID is a microsimulation model and policy simulator via an interactive dashboard to investigate reducing racial disparities in maternal mortality rates through strategic interventions.

As a student, under the guidance and support of Dr. Culbertson (HPSM), Ms. Mayer obtained a Strategic and Communications Internship at Kaiser Permanente's Mid-Atlantic States Headquarters which she used as her Practice Experience, and then accepted their invitation to stay for nearly a year more.

This November, you can find Ms. Mayer with her poster, *MITRE Maternal Mortality Interactive Dashboard (3MID): A Tool To Drive United States Quality Improvement Efforts In Maternal Care*, at APHA's Annual Meeting. Her work has also been featured in [Health Affairs Blog](#) and as an op-ed in the [Baltimore Sun](#) among other publications.

## Research ↔ Practice

The Office of Public Health Practice and Community Engagement brings you *Research<->Practice*. It is our intent to provide regular updates on the PH practice aspects of the work of our faculty, students, and staff. If you have work to feature, submit to [Research<->Practice](#), or contact the Office of Public Health Practice and Community Engagement.