



# October SGA Meeting

10.09.17



# AGENDA

- LC P: Laura Ricks
- NORDC: Chentrell Brown & Shonnda Smith
- Community Engagement and Volunteer Events: Brittney Harbin and Yasmin Davis
- Committee Meeting Reports
- Peer Academic Liaison Check-In: Nathan Yoguez
- Fundraising/Upcoming Events/Updates
- Football Tickets Raffle

---

# Guest Speakers



**LOUISIANA**  
**CANCER PREVENTION &**  
**CONTROL PROGRAMS**

# Who We Are

- We are the **Louisiana Cancer Prevention & Control Programs** or **LCP**.



**LOUISIANA**  
**CANCER PREVENTION &**  
**CONTROL PROGRAMS**

- Our name and acronym are modeled after the Centers for Disease Control and Prevention (CDC).



# Our Mission

**The Louisiana Cancer Prevention & Control Programs' (LCP) mission is to eliminate suffering and death in Louisiana by focusing on cancers that can be prevented or detected early and cured.**

# Priority Cancers

- Breast Cancer
- Cervical & HPV-Related Cancers
- Colorectal Cancer
- Lung & Other Tobacco-Related Cancers

# LCP Breast Cancer Interventions



**lchp**  
**LOUISIANA**  
**BREAST & CERVICAL**  
**HEALTH PROGRAM**

Provides no-cost mammograms and Pap tests to Louisiana women who qualify, with special emphasis on rarely screened women. Contracts with providers all over the state.

**GULF STATES YOUNG BREAST**  
**CANCER SURVIVOR NETWORK**  
**SURVIVE** **20** **DATE**  
**SURVIVE** **50** **DATE**  
**SURVIVE** **100** **DATE**

Provides online support and resources to young breast cancer survivors.

**ISP** **LOUISIANA**  
**CANCER PREVENTION**  
**CONTROL PROGRAM**



# Early Detection is Key



## **Breast Cancer:**

**When found early, or in a localized stage, the survival rate for breast cancer ranges from 93% - 100%!\***

Even at Stage III, breast cancer has a 72% survival rate.

\* (Localized stage are 0, I and II; 5-year relative survival rate)

## **Cervical Cancer:**

**Is entirely preventable through screenings, such as pap tests, by identifying pre-cancers before they turn into cancer.**

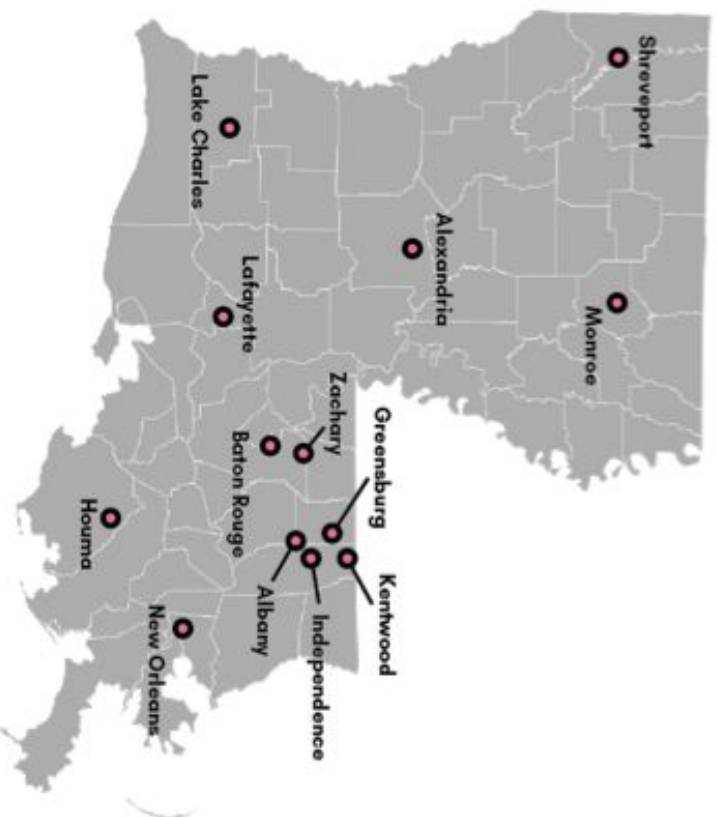
# What Does LBCHP Provide?



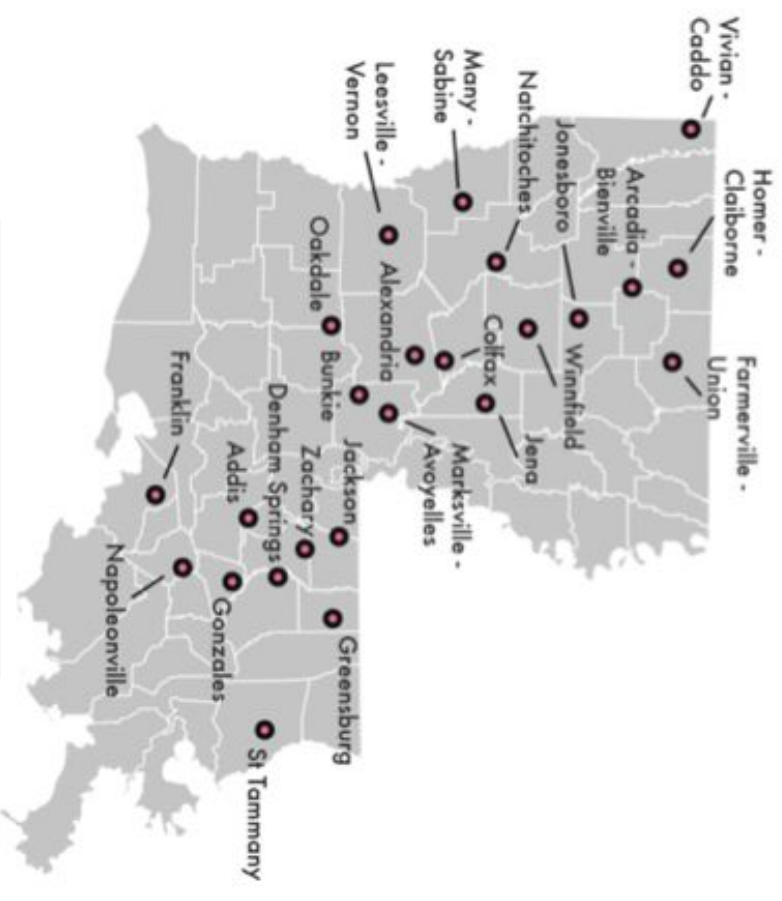
## **No-Cost Mammograms and Pap Tests for Louisiana Women Who Qualify!**

LBCHP Patient Navigators also help qualifying women overcome barriers that prevent them from getting screening services.

# LBCHP Provider Sites



Facility Locations



Mobile Mammography Sites



# Young Women Get Breast Cancer Too

Though more rare, 11% of women who get breast cancer are under the age of 45.

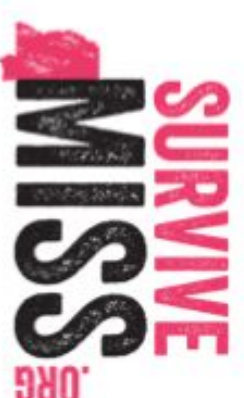
**Black women are more likely to get breast cancer at a younger age**, which means Louisiana and the Gulf States have higher numbers of young breast cancer survivors. (YBCS)

**Young women with breast cancer face different issues** than older women with the disease, including:

- More aggressive types of the disease
- Fertility decisions that need to be made before treatment
- Genetic issues that have implications for treatment and other family members, including males
- Relationship concerns with partners and children
- Career and financial implications

# Gulf States Young Breast Cancer Survivor Network's Mission

Our mission is to help improve the quality of life for young breast cancer survivors, as well as their family and friends, by providing continuing resources and support.



[SHOP](#) | [DONATE](#)



FOLLOW US



[EXPERT ADVICE](#)

[WOMEN LIKE YOU](#)

[FIND SUPPORT](#)

[THE PROBLEM](#)

[DAT BLOG](#)

[ABOUT](#)

[CONTACT](#)



## Advice From The EXPERTS

[Click Here for Expert Advice](#)

Louisiana's Young Breast Cancer Survivor Network

Find breast cancer support and resources in Louisiana and nationally.

[EXPLORE RESOURCES](#)

### MY BREAST CANCER STORY

A mother and daughter share their powerful story of survival. Sherling Werner was diagnosed with breast cancer when she was 25, years old. Her mother was diagnosed only three months later.



**SURVIVOR**  
**Sherling**  
**Werner**





# LCP Cervical & HPV-Related Cancer Interventions



Provides no-cost mammograms and Pap tests to Louisiana women who qualify. Contracts with providers all over the state.



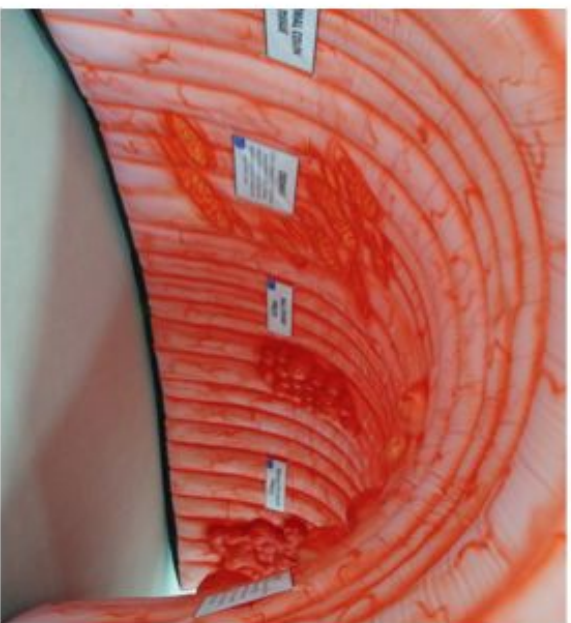
HPV/Cervical Cancer Screening Study to help determine if an at-home screening test would be effective.



Provider Positive Deviance Study to help determine what doctors with high HPV vaccination rates are doing right; disseminating that information



# LCP Colorectal Cancer Interventions



Louisiana Colorectal Cancer Roundtable (LCCRT) –consortium of health experts, organizations, insurers and more to work on strategies to reduce CRC mortality



Louisiana Colorectal Health Project /Quality Improvement – Help FQHCs improve screening rates via evidence-based interventions.





# LCCRT Overview

## Data

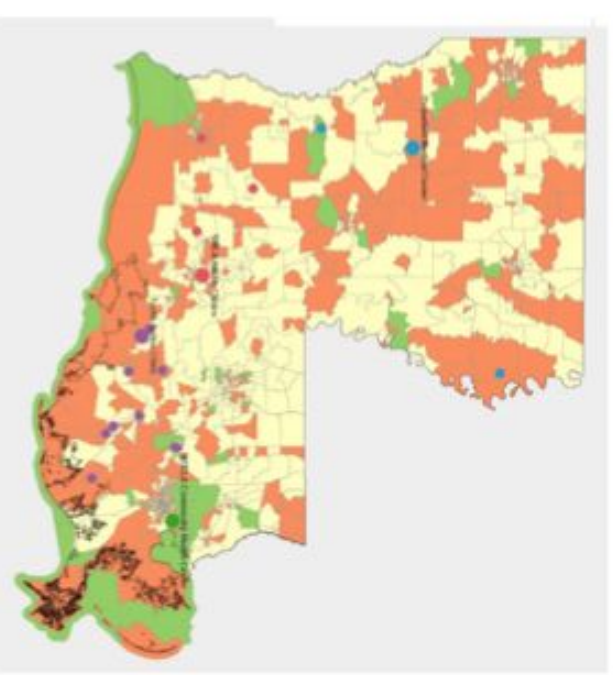
- Geospatial analysis
- Secondary sources of data
- Real-time data solution for primary care providers

## Access to Care

- Develop Medical Neighborhoods
- Access Surveys, GIS, FQHCs
- Blue Cross Blue Shield Competition Develop and support policies that improve Access
- Work with Medicaid to promote CRC as a QI measure

## Provider Education

- Educate clinicians about 80% by 2018
- Promote FIT First
- Provider Competition



# LA Colorectal Health Project Overview

**GOAL: Organized Approaches to Increasing Colorectal Cancer Screening Rates.**

- 4 clinics NOELA, SWLA, Out Patient Medical, Teche
- Provide incentives
- Provide technical assistance & practice facilitation
- Provide a data solution to assist in provider assessment & feedback
- Clinics choose a champion
- Clinics choose a screening goal
- Clinics choose a combination of 2-4 evidence based interventions to implement

# LCP Lung & Tobacco-Related Interventions



Education – Data, resources, cessation links



LOUISIANA HEALTHY  
COMMUNITIES COALITION

Louisiana Healthy Communities Coalition (LHCC) – Works in conjunction with partners and communities to reduce chronic disease factors, specifically tobacco and obesity.



# Louisiana Healthy Communities Coalition

**A statewide group of local coalitions working to reduce disease and improve health**

**We want to...**

1. Improve Louisiana's health rankings
2. Increase community awareness and knowledge about improving health

**By addressing...**

- Tobacco
- Obesity
- Cancer



# Other LCP Projects

- Survivorship Grant
- State Cancer Plan



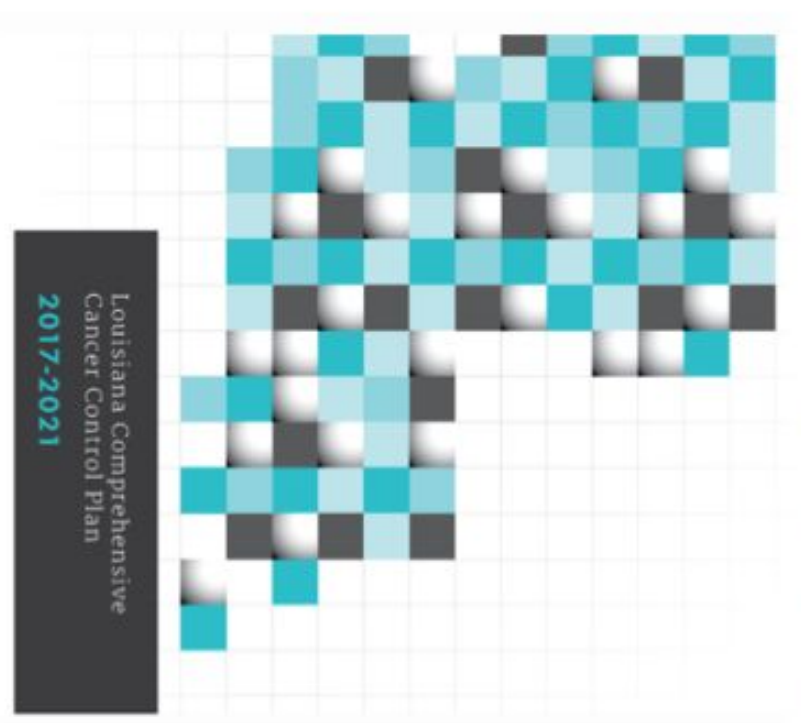
## LCP Survivorship Grant

**Survivorship Grant** – This grant funds research into cancer survivorship for the following

- Breast
- Cervical
- Colorectal
- Lung
- Prostate
- Kidney/Renal Pelvic



# State Cancer Plan



Louisiana Comprehensive  
Cancer Control Plan  
2017-2021

State Cancer Plan – LCP funds a five-year evidence-based cancer guidance plan to help individuals, health workers and organizations and communities reduce cancer in Louisiana.

# **New Orleans Recreation Development Commission**

October 9, 2017







# Mission & Vision

---

## Mission

To advance the physical, mental, and social well-being of New Orleanians by providing safe and welcoming environments for recreational, athletic, and cultural experiences.

## Vision

A sustainable and innovative organization that transforms lives.

## Tag Line

Something for Everyone.



## The Path to Now...

### 2010-2017 Facility Comparison

	2010	2017
Rec Centers	3	12
Tennis Centers	1	2
Year Round Indoor Pools	0	3
Summer Outdoor Pools	8	12
Baseball Stadiums	3	4
Football Stadiums	2	3
Active Playgrounds	23	35
Skate Parks	0	1
Teen Centers	0	6
Fitness Centers	0	6
Outdoor Fitness Center	0	2



## 2010-2017 Facility Comparison

• Summer Camps			
	2010	2017	
Youth	14	41	
Teen	0	13	

• Programming			
	2010	2017	
Dance	✓		
Piano	✓		
Choir	✓		
Seniors Program	✓		
Band	✓		
Youth Little League (6)	✓		
Tennis	✓		





## NORD Job Opportunities

---

- Civil Service Positions (Must get on register)
  - Nola.gov-Employment
  - Rec Center Assistant (PT)
  - Site Facilitators
  - Office Assistant
  - Lifeguards
  - Recreation Leader
  - Recreation Program Assistant
  - Summer Positions:





# Volunteer Opportunities

---

- Athletics
  - Coaches
  - Event Management
- Events
  - Night Out Against Crime
  - Halloween
  - Easter
  - Family Game Nights
  - Youth Fit Fest
- Service Projects
  - Park or Center Beautifications
- Rec Centers
  - Room Monitors
  - Bag check
- Teens
  - Teen Centers
  - Teen Council
  - Teen Events
- Outdoors
  - Certs for Service
  - Canoeing
  - Fishing
  - Urban Camping



## Upcoming Events

---

- October 7<sup>th</sup> – MITP – Moana (Stallings Gentilly)
- October 13<sup>th</sup> – MITP – Legend of Tarzan (Digby)
- October 14<sup>th</sup> – Teen Council Meeting (Milne)
- October 17<sup>th</sup> 6-8pm – Night Out Against Crime (All)
- October 27<sup>th</sup> – 7-10pm Teen Halloween Dance (Milne)
- October 31<sup>st</sup> – 12-1pm Thriller Flash Mob (City Hall)
- October 31<sup>st</sup> - 6-9pm pm Halloween Spooktacular (All)
- November 17<sup>th</sup> 6:00-7:30pm – Family Game Night (Sanchez)

---

# Community Engagement and Volunteer Events

# NO/AIDS Walk





# Susan G. Komen Zumbathon





## Race for the Cure

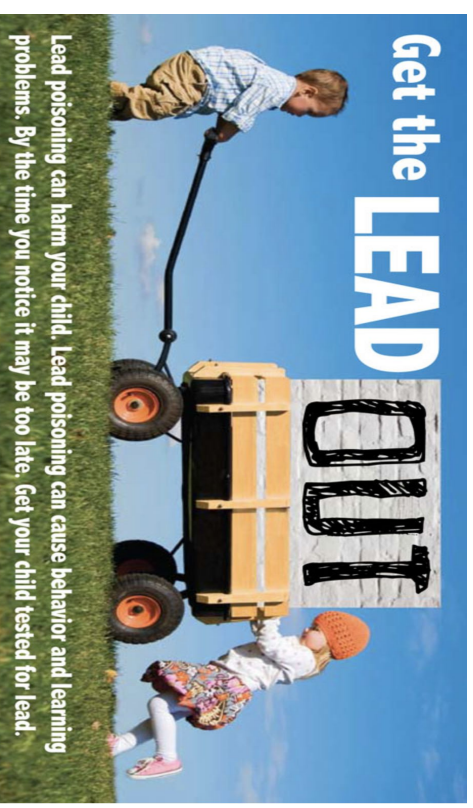
- Race Day: October 21st at 9:00
- Last Day to Sign Up: October 10



# National Lead Prevention Week

- October 23rd-27th
- Office of Public Health calling on volunteers to help prepare for the week!
- Preparation between **October 9th-October 20th**

Contact: Kera Simmons at [ksimm5@lsuhsc.edu](mailto:ksimm5@lsuhsc.edu)



---

## ASPCA: Pet Fest

- Pet Fest Event: Sunday, October 22nd from 10:00AM-4:00PM
- Last Day to Sign Up: October 20th





# Crescent City Yoga Fest

- Cuccia-Byrnes Playground
  - November 11th, 2017
  - 8400 Olive St.
  - 12:00PM-6:00PM





# NORDC Event



- New Orleans Recreation Development Commission
  - Game Night
    - November 17th, 2017
    - Sanchez Multi-Purpose Center
    - 1616 Caffin Ave
    - 6:00PM-7:30PM



## **Committee Meeting Reports - Any updates?**

- Evaluation Committee
- Research Committee
- Grievance Committee
- Curriculum Representatives

**Peer Academic  
Liaison:  
Check-In**





---

# Fundraising/Upcoming Events/Updates

## Basketball Tickets!

- New Orleans Pelicans vs. Orlando Magic Tickets
- October 30, 2017 @ 7:00 PM
- Tickets have been bought and should arrive by 10/23
- Lisa will email those that purchased tickets on how to pick them up!



# T-Shirt Update!



- T-Shirt Orders will be ready around October 18th-24th, Lisa will email you to come pick them up once they arrive!

## 50/50 Raffle Fundraising Event!



- Details about the 50/50 raffle and how to enter will be sent via email, stay tuned!



- Guess how much candy is in the jar! You get a free fall basket! You can begin making guesses from November 6-10<sup>th</sup>

# Fall Giveaway!







# "Ask a PhD Student" Panel

MONDAY, OCTOBER 16TH  
NOON-1:00 PM  
LEC ROOM 303

*Join us for an interactive discussion with current LSUHSC SPH PhD students to learn more about the application process and what to expect from life as a PhD student.*

**Presented by SOAR**

For more information, email  
[soar@lsuhsc.edu](mailto:soar@lsuhsc.edu)

# Join Girl Scouts on Saturday, October 21

9:30 a.m. – 2 p.m.  
University of New Orleans  
campus



## BELIEVE IN G.I.R.L.s event

### Target Audience:

Nearly 2,000 G.I.R.L.s (Go-getters, Innovators, Risk-takers, Leaders) from across southeast Louisiana will celebrate with a science and go. expo atmosphere. Girl Scout troops will explore the various exhibits and presentations throughout the day. Be sure to provide information about your organization and any opportunities you have for Girl Scouts throughout the year.

Presenters will provide a hands-on, informative display or activity with educational aspects relating to Girl Scouts' focus areas such as STEM (Science, Technology, Engineering & Math), Life Skills, the Outdoors, the Arts, and Entrepreneurship. This is the perfect opportunity to showcase these areas and your organization, role models and career opportunities that exist, as well as how girls can get involved. Lunch will be provided to presenters.

Organization name: Association of Women in Science - South Louisiana Chapter

Contact name: \_\_\_\_\_

Contact number: (504) 568-4261

Email address: \_\_\_\_\_

Number of people from your organization attending: 15-20

### We will participate by hosting:

☒ Open (0) 90-foot table for continuous display/activity inside main exhibit area.

☐ A short and stop themed presentation in a classroom setting with audio.

Number of presenters: \_\_\_\_\_

You number of students allowed per presentation:

Length of time needed: ☐ 30 min. ☐ 45 min. ☐ 60 min.

☐ A short and stop themed presentation in a lab setting with audio.

Number of presenters: \_\_\_\_\_

You number of students allowed per presentation:

Length of time needed: ☐ 45 min. ☐ 60 min. ☐ 90 min.

☐ A short & stop themed presentation in a large auditorium setting.

Number of presenters: \_\_\_\_\_

Length of time needed: ☐ 30 min. ☐ 45 min. ☐ 60 min.

☐ Outdoor space as needed.

Please describe:

\_\_\_\_\_

Submit this form to: [scoutsgo@scoutslouisiana.org](mailto:scoutsgo@scoutslouisiana.org) or 18351 WYOMING ST., SUITE 100, METairie, LA 70002, no later than August 15, 2017. Contact Karen for more information at (504) 735-8270 ext. 6265 or (800) 664-7371.

• **Use any specific materials or equipment needed at your table (reference running water, wall projector and screen, etc.)**

• **Could we please have a total of (4) six foot tables? Thank you.**

• **Briefly explain your display and any type of hands-on activity you will have available for Girl Scouts to participate in:**

1. Microscope with viewing of slides under the microscope.
2. Wearing protective/professional clothing - Lab coats, etc.
3. Measuring volume and using scientific equipment and practice using pipette to transfer color water in tubes.
4. Anatomical models



### **SFS Painting and Pinot**

- October 19 in the garden (5-7pm)
- Channel your inner Bob Ross and enjoy a cool relaxing night out painting this cute fall scene
- Prices are \$35 including canvas, art supplies, 2 beverages of your choice (red or white wine), and cheese





**YOU ARE INVITED**

**LSU Health**

**NEW ORLEANS**

**School of Public Health**

**Career Fair**

**Wednesday, October 11, 2017**

**11:30 – 1:30pm**

**Human Development Center  
411 S. Prieur St, NOLA**





# FOOTBALL TICKETS RAFFLE





# Next SGA Meeting

11.13.17